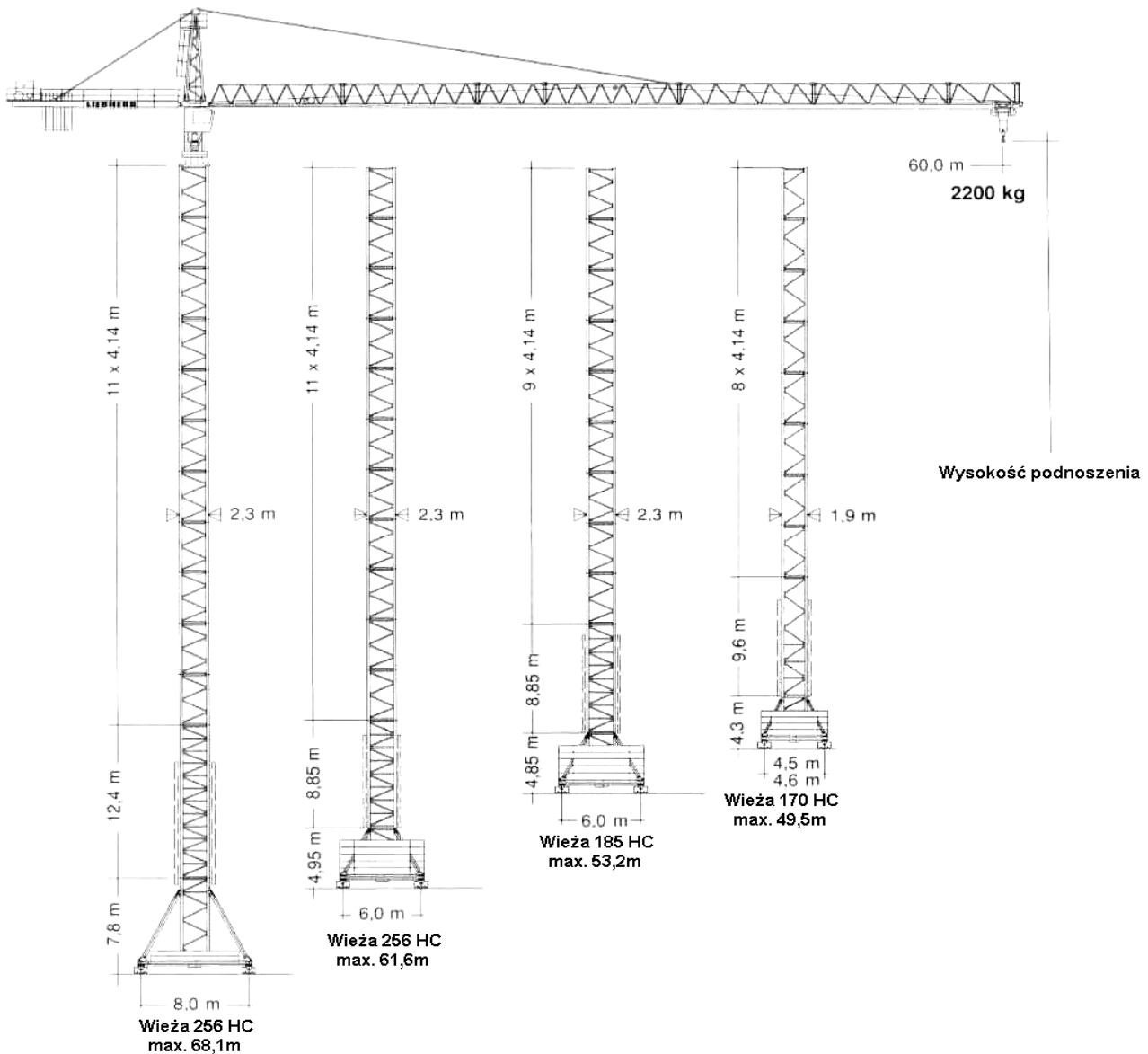
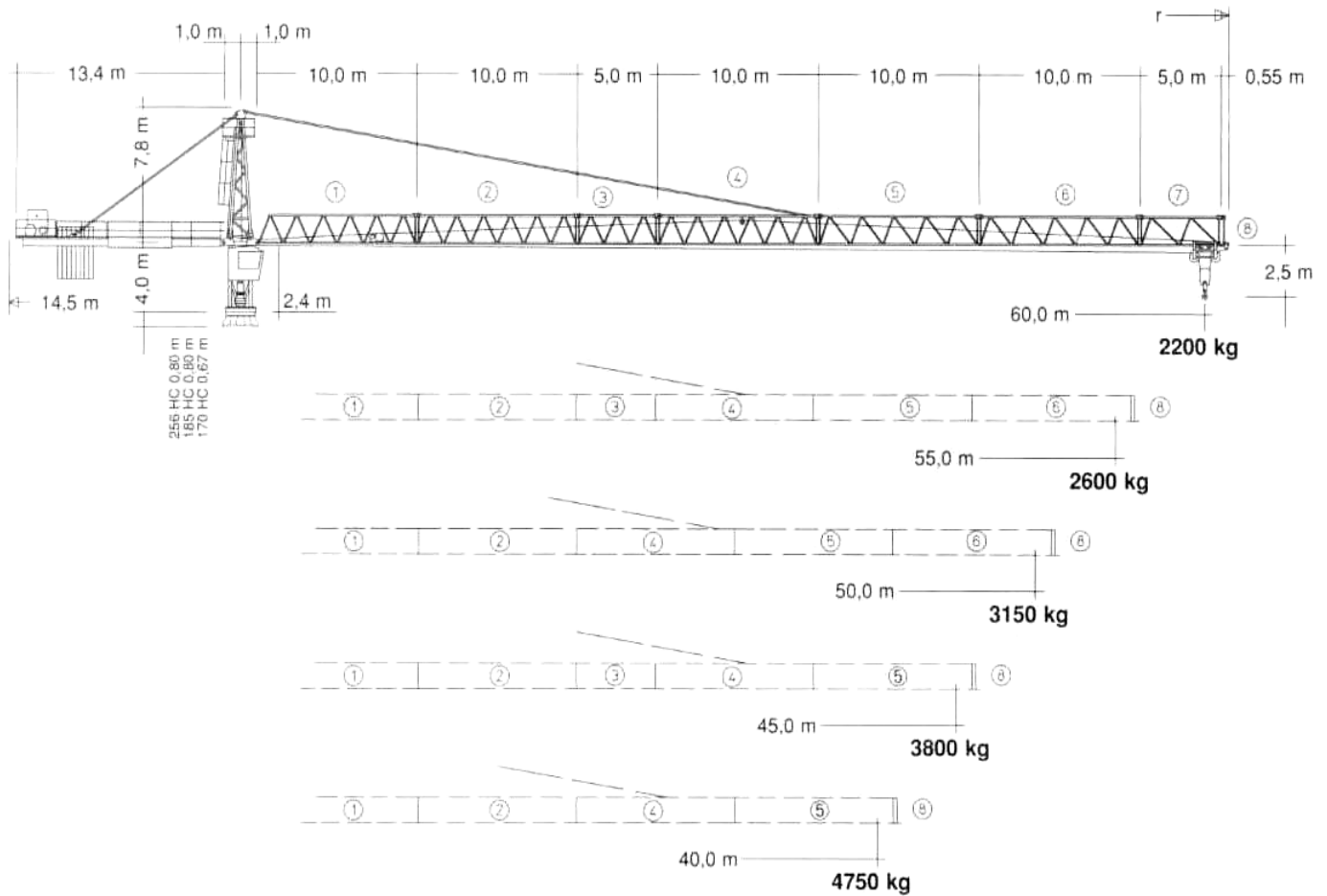


ŻURAW WIEŻOWY LH-180EC-H





Wysokość podnoszenia:

| Z wieżą | 256 HC | | 185 HC | | 170 HC | |
|-------------------------|---------------|--------|---------------|--------|---------------|--------|
| Łącznie z wstawką wieży | | | | | | |
| 0 | m | 14,9 | 22,5 | m | 11,4 | 16,1 |
| 1 | | 19,1 | 26,7 | | 15,3 | 20,2 |
| 2 | | 23,2 | 30,8 | | 19,6 | 24,3 |
| 3 | | 27,3 | 34,9 | | 23,8 | 28,5 |
| 4 | | 31,5 | 39,1 | | 27,9 | 32,6 |
| 5 | | 35,6 | 43,2 | | 32,1 | 36,8 |
| 6 | | 39,8 | 47,4 | | 36,2 | 40,9 |
| 7 | | 43,9 | 51,5 | | 40,3 | 45,0 |
| 8 | | 48,0 | 55,6 | | 44,5 | 49,2 |
| 9 | | 52,2 | 59,8 | | 48,6* | 53,3* |
| 10 | | 56,3* | 63,9* | | 52,8* | 57,5* |
| 11 | | 60,5* | 68,1* | | - | - |
| 12 | | 64,6* | - | | - | - |
| Promień wnętrza krzywej | | 18,0 m | | 12,5 m | | 12,0 m |
| | | | | | | 8,5 m |



Tabela udźwigu:

| Długość wysięgnika | | max. kg | m/kg | | | | | | | | | | | | | | | | | | |
|--------------------|------------|---------------------|-------|------|------|------|------|------|------|------|------|------|------|------|------|------|------|------|------|------|------|
| | | | 20,0 | 22,0 | 24,0 | 26,0 | 28,0 | 30,0 | 32,0 | 34,0 | 36,0 | 38,0 | 40,0 | 42,0 | 45,0 | 48,0 | 50,0 | 52,0 | 55,0 | 58,0 | 60,0 |
| m | r | m/kg | | | | | | | | | | | | | | | | | | | |
| 60,0 | (r = 61,6) | 2,4 - 17,3 10000 | 8510 | 7640 | 6920 | 6310 | 5790 | 5340 | 4940 | 4600 | 4290 | 4010 | 3760 | 3540 | 3240 | 2980 | 2820 | 2680 | 2480 | 2300 | 2200 |
| 55,0 | (r = 56,6) | 2,4 - 17,9 10000 | 8830 | 7930 | 7190 | 6560 | 6020 | 5550 | 5140 | 4790 | 4470 | 4180 | 3920 | 3690 | 3380 | 3110 | 2950 | 2800 | 2600 | | |
| 50,0 | (r = 51,6) | 2,4 - 18,8 10000 | 9330 | 8390 | 7600 | 6940 | 6370 | 5880 | 5450 | 5080 | 4740 | 4440 | 4170 | 3930 | 3600 | 3320 | 3150 | | | | |
| 45,0 | (r = 46,6) | 2,4 - 19,6 10000 | 9780 | 8790 | 7970 | 7280 | 6690 | 6180 | 5730 | 5340 | 4990 | 4670 | 4390 | 4140 | 3800 | | | | | | |
| 40,0 | (r = 41,6) | 2,4 - 20,9 10000 | 10000 | 9450 | 8570 | 7830 | 7200 | 6660 | 6180 | 5760 | 5390 | 5050 | 4750 | | | | | | | | |

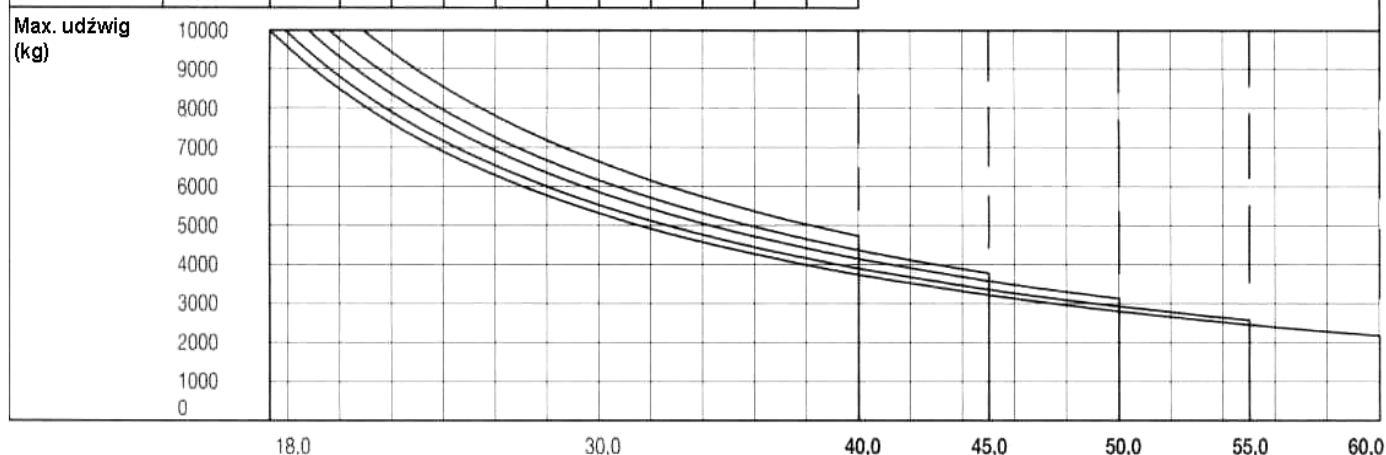


Tabela szybkości:

| | | |
|-----------------------------------|-------------------------------------|-------------------------------|
| | U/min 0 ↔ 0,7 sl./min tr./min | 2 x 5,0 kW |
| | 0 ↔ 96,0 m/min | 5,5 kW, FU |
| | 25,0 m/min | 2 x 7,5 kW |
| Wymagana moc (górną część) | | Wciągarka |
| | | 37,5 kW 45 kW 45 kW, FU 65 kW |
| kVA | 58,0 68,0 59,0 88,0 | |

| Wciągarka | Moc | |
|--|-----|------------------|
| | kg | m/min |
| 37,5 kW WIW 250 JX 403 Elmag, WSB Wysokość podnoszenia 113,0m (4 warstwy) | 1 | 10000 1,1 / 16,0 |
| | 2 | 3200 3,3 / 50,0 |
| | 3 | 1500 6,0 / 90,0 |
| 45,0 kW WIW 260 JX 422 Elmag, WSB Wysokość podnoszenia 181,0m (6 warstwy) | 1 | 10000 1,3 / 19,0 |
| | 2 | 4200 3,1 / 47,0 |
| | 3 | 2200 5,5 / 82,0 |
| 45,0 kW, FU WIW 260 MW 403 Wysokość podnoszenia z LS-bębniem 181,0m (6 warstwy) | | |
| | 1 | 10000 1,7 / 26,0 |
| | 2 | 4200 4,3 / 65,0 |
| 65,0 kW WIW 280 JX 422 Elmag, WSB Wysokość podnoszenia 181,0m (6 warstwy) | 1 | 10000 1,7 / 26,0 |
| | 2 | 4200 4,3 / 65,0 |
| | 3 | 2200 7,7 / 116,0 |



Wymiary i wagi:

| l.p | ilość | Górne części | | L (m) | B (m) | H (m) | kg | |
|-----------------------------|----------------------|------------------------------|--------|--|--------------|--------------|-------------|-------------|
| 1 | 1 | Kabina z mechanizmem obrotu | | 170 HC | 5,20 | 2,70 | 2,70 | 7500 |
| | | | 185 HC | 5,30 | 2,80 | 2,70 | 8100 | |
| | | | 256 HC | 5,30 | 2,80 | 2,70 | 8100 | |
| 2 | 1 | Górny element wieży (sztyca) | | 7,90 | 1,90 | 1,60 | 1750 | |
| 3 | 1 | Odciąg | | 13,50 | 2,40 | 0,53 | 3500 | |
| 4 | 1 | Mechanizm wciągarki | | 250 JX 403 260 JX 422 280 JX 422 | 3,60 | 2,40 | 1,80 | |
| 5 | 1 | Element wysięgnika | | 10,21 | 1,48 | 1,90 | ① 2010 | |
| 6 | 4 | Element wysięgnika | | | 10,30 | 1,48 | 1,90 | ② 1320 |
| | | | | | | | | ③ 1400 |
| | | | | | | | | ④ 1100 |
| | | | | | | | | ⑤ 710 |
| 7 | 2 | Element wysięgnika | | | 5,30 | 1,48 | 1,90 | ⑥ 710 |
| | | | | | | | | ⑦ 340 |
| 8 | 1 | Element wysięgnika | | 0,60 | 1,48 | 2,00 | ⑧ 160 | |
| 9 | 1 | Wózek i hak ładowania | | 1,85 | 1,65 | 1,10 | 860 | |
| Wieża | | | | | | | | |
| 10 | 8-9 9-10 10-11 | Element wysięgnika | | 170 HC | 4,14 | 1,90 | 1,90 | 1850 |
| | | | | 185 HC | 4,14 | 2,30 | 2,30 | 2050 |
| | | | | 256 HC | 4,14 | 2,30 | 2,30 | 2260 |
| 11 | 1 | Element wysięgnika | | 170 HC | 12,42 | 1,90 | 1,90 | 4780 |
| | | | | 185 HC | 12,42 | 2,30 | 2,30 | 5520 |
| | | | | 256 HC | 12,42 | 2,30 | 2,30 | 5520 |
| 12 | 1 | Część podstawy wieży | | 170 HC | 9,60 | 1,90 | 1,90 | 4350 |
| | | | | 185 HC | 8,85 | 2,30 | 2,30 | 4100 |
| | | | | ⑨ 256 HC | 8,85 (12,42) | 2,30 (2,30) | 2,30 (2,30) | 4580 (7700) |
| Sprzęt do wchodzenia | | | | | | | | |
| 13 | 1 | Część przewodnika | | 170 HC | 9,04 | 2,31 | 2,28 | 4750 |
| | | | | 185 HC | 8,39 | 2,80 | 2,50 | 5100 |
| | | | | 256 HC | 8,39 | 2,80 | 2,50 | 5100 |
| 14 | 1 | Hydrauliczna jednostka | | 170 HC | 2,00 | 1,10 | 1,00 | 1100 |
| | | | | 185 HC | 2,30 | 1,25 | 1,00 | 1150 |
| | | | | 256 HC | 2,30 | 1,25 | 1,00 | 1150 |
| Przeciwwaga | | | | | | | | |
| 15 | 2 | Wózek z napędem | | 170 HC | 1,46 | 0,84 | 0,87 | 1080 |
| | | | | 185 HC | 1,46 | 0,84 | 0,87 | 1080 |
| | | | | 256 HC | 1,63 (1,46) | 0,92 (0,84) | 0,95 (0,87) | 1450 (1080) |
| 16 | 2 | Wózek z napędem | | 170 HC | 1,15 | 0,60 | 0,87 | 800 |
| | | | | 185 HC | 1,15 | 0,60 | 0,87 | 800 |
| | | | | 256 HC | 1,37 (1,15) | 0,62 (0,60) | 0,95 (0,87) | 1120 (800) |
| 17 | 1 | Podpora ramienia (długa) | | 170 HC | 7,15 | 0,80 | 0,70 | 1070 |
| | | | | 185 HC | 9,10 | 0,82 | 0,74 | 1350 |
| | | | | 256 HC | 9,10 (11,95) | 0,80 (0,82) | 0,80 (0,80) | 1650 (2200) |
| 18 | 2 | Podpora ramienia (krótka) | | 170 HC | 3,45 | 0,60 | 0,70 | 500 |
| | | | | 185 HC | 4,41 | 0,62 | 0,71 | 615 |
| | | | | 256 HC | 4,45 (5,58) | 0,77 (0,65) | 0,77 (0,77) | 800 (1035) |
| 19 | 2+2 | Podpora graniczna | | 170 HC | 4,08 - 4,30 | 0,16 - 0,33 | 0,11 - 0,14 | 80 - 200 |
| | | | | 185 HC | 5,48 - 5,46 | 0,11 - 0,17 | 0,16 - 0,38 | 118 - 454 |
| | | | | 256 HC | 5,46 - 5,40 | 0,11 - 0,18 | 0,16 - 0,38 | 175 - 525 |
| | | | | (7,52 - 7,46) | (0,1 - 0,17) | (0,1 - 0,38) | (366 - 912) | |
| 20 | 4 | Podpora (rozpórka) | | 170 HC | 3,53 | 0,25 | 0,17 | 240 |
| | | | | 185 HC | 4,23 | 0,17 | 0,25 | 275 |
| | | | | 256 HC | 4,14 (6,55) | 0,18 (0,22) | 0,25 (0,25) | 320 (600) |
| 21 | 1 | Część podstawy wieży | | 170 HC | 3,30 | 2,15 | 2,15 | 2000 |
| | | | | 185 HC | 3,73 | 2,52 | 2,52 | 1950 |
| | | | | 256 HC | 3,73 (6,70) | 2,62 (2,53) | 2,62 (2,53) | 2550 (3800) |
| 22 | 1 | Skrzynka z kablami | | 170 HC 185 HC 256 HC | 9,00 | 1,60 | 1,00 | 4000 |

