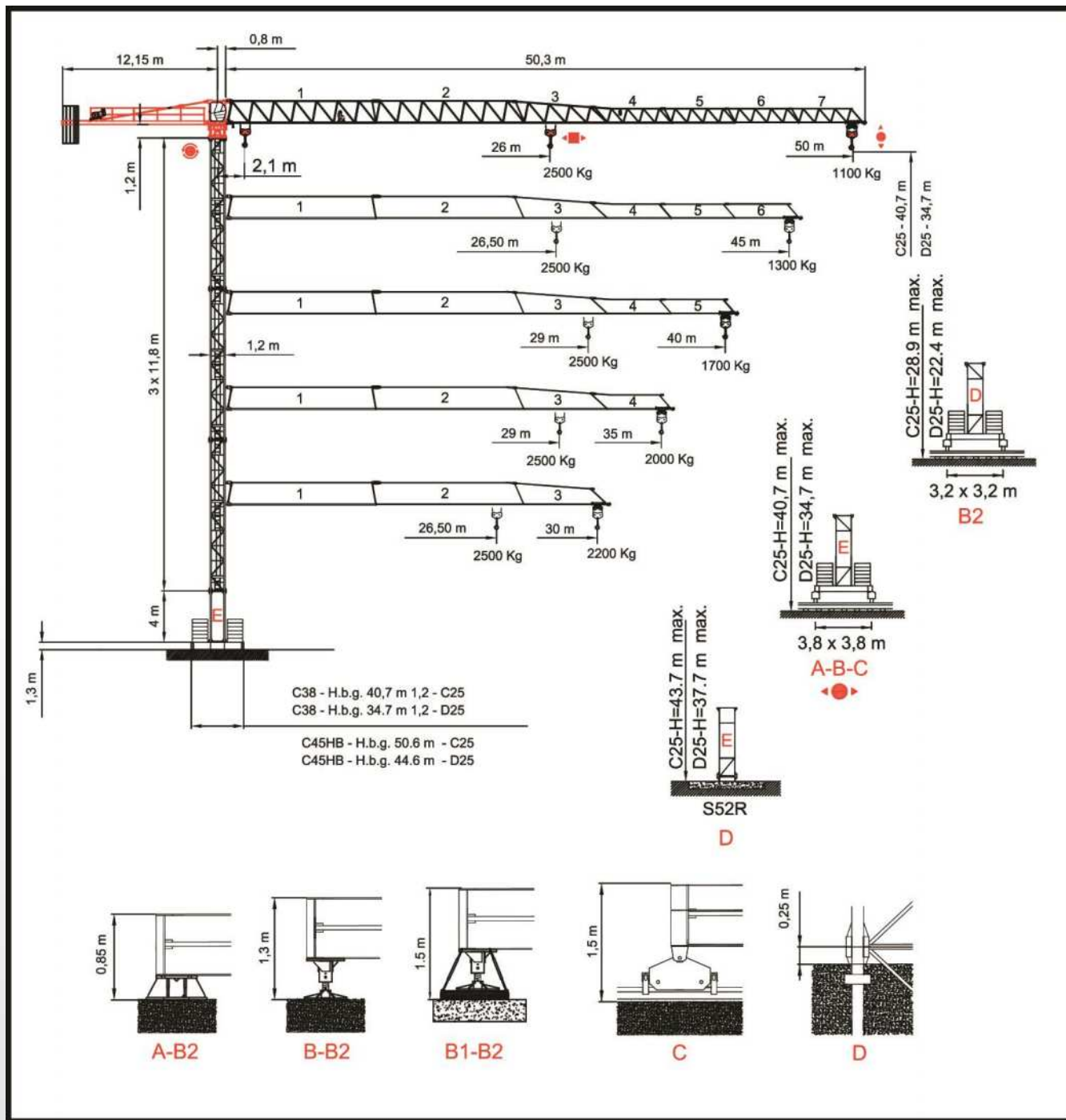


ŻURAW WIEŻOWY SAEZ TL50 5T



TADEX ŻURAWIE

62-030 Luboń, ul. Dworcowa 47
 tel. +48 61 8 666 777; 601 149 358
 tadex@dzwigi-budowlane.pl

WWW.DZWIGI-BUDOWLANE.PL



Tabela udźwigu:

| | | | | | | | | | | | | | | | | | | | |
|----------|------|-------|--------|------|------|------|------|------|------|------|------|------|------|------|------|------|-----|----|--|
| 50 m | 18 | 20 | 24 | 25 | 26 | 28 | 30 | 33 | 35 | 37 | 39 | 40 | 43 | 45 | 48 | 50 | m | | |
| | 2500 | 2500 | 2500 | 2500 | 2500 | 2383 | 2181 | 1929 | 1786 | 1660 | 1548 | 1496 | 1357 | 1275 | 1165 | 1100 | Kg | | |
| | 9 | 13,60 | 15 | 15,5 | 18 | 21 | 24 | 27 | 30 | 33 | 35 | 38 | 40 | 43 | 45 | 48 | 50 | m | |
| | 5000 | 5000 | 4773 | 4574 | 3770 | 3092 | 2603 | 2233 | 1944 | 1712 | 1581 | 1412 | 1314 | 1186 | 1111 | 1010 | 950 | Kg | |
| 45 m | 18 | 20 | 24 | 25 | 26 | 26,5 | 28 | 30 | 33 | 35 | 37 | 39 | 40 | 43 | 45 | m | | | |
| | 2500 | 2500 | 2500 | 2500 | 2500 | 2500 | 2424 | 2220 | 1964 | 1819 | 1691 | 1577 | 1525 | 1383 | 1300 | Kg | | | |
| | 9 | 13,9 | 15 | 16,5 | 18 | 21 | 24 | 27 | 30 | 33 | 35 | 38 | 40 | 43 | 45 | m | | | |
| | 5000 | 5000 | 4905 | 4336 | 3877 | 3182 | 2680 | 2301 | 2005 | 1766 | 1632 | 1459 | 1359 | 1227 | 1150 | Kg | | | |
| 40 m | 18 | 20 | 24 | 25 | 26 | 28 | 29 | 30 | 33 | 35 | 37 | 39 | 40 | m | | | | | |
| | 2500 | 2500 | 2500 | 2500 | 2500 | 2500 | 2500 | 2458 | 2179 | 2021 | 1881 | 1757 | 1700 | Kg | | | | | |
| | 9 | 12 | 15,... | 18 | 18,5 | 21 | 24 | 27 | 30 | 33 | 35 | 38 | 40 | m | | | | | |
| | 5000 | 5000 | 5000 | 4338 | 4190 | 3568 | 3013 | 2593 | 2265 | 2001 | 1852 | 1660 | 1550 | Kg | | | | | |
| 35 m | 18 | 20 | 24 | 25 | 26 | 28 | 29 | 30 | 33 | 35 | m | | | | | | | | |
| | 2500 | 2500 | 2500 | 2500 | 2500 | 2500 | 2500 | 2433 | 2156 | 2000 | Kg | | | | | | | | |
| | 9 | 12 | 15,3 | 18 | 18,5 | 21 | 24 | 27 | 30 | 33 | 35 | m | | | | | | | |
| | 5000 | 5000 | 5000 | 4140 | 4184 | 3563 | 3009 | 2589 | 2262 | 1998 | 1850 | Kg | | | | | | | |
| 30 m | 18 | 20 | 24 | 25 | 26 | 26,9 | 28 | 30 | m | | | | | | | | | | |
| | 2500 | 2500 | 2500 | 2500 | 2500 | 2500 | 2402 | 2200 | Kg | | | | | | | | | | |
| | 9 | 14,2 | 15 | 17,5 | 18 | 21 | 24 | 27 | 30 | m | | | | | | | | | |
| | 5000 | 5000 | 5000 | 4102 | 3957 | 3248 | 2737 | 2351 | 2050 | Kg | | | | | | | | | |

Tabela prędkości:

(SF19)25 Hp (18,5 Kw) 3V
400V / 50HZ
H.B.G. 84 S/R Ø10mm

| | | | | | | | | |
|--|--|-------|-----------|------|------|-----------|------|------|
| | | m/min | 8 | 31 | 62 | 4 | 16 | 31 |
| | | Kg | 2500 | 2500 | 1250 | 5000 | 5000 | 2500 |
| | | Kw | 18,5 | 18,5 | 18,5 | 18,5 | 18,5 | 18,5 |
| | | m/min | 30 / 60 | | | 30 / 60 | | |
| | | Kw | 1,1 / 1,8 | | | 1,1 / 1,8 | | |
| | | r.p.m | 0,3 | 0,6 | 0,9 | 0,3 | 0,6 | 0,9 |
| | | Nm | 65 | | | 65 | | |
| | | m/min | 20 | | | 20 | | |
| | | Kw | 2 x 2,2 | | | 2 x 2,2 | | |

* (SF24INV)33 Hp (24 Kw)
400V / 50HZ - 60HZ
H.B.G. 120 S/R Ø10mm

| | | | | | | | | |
|--|--|-------|------|------|------|------|------|------|
| | | m/min | 40 | 60 | 80 | 20 | 30 | 40 |
| | | Kg | 2500 | 2500 | 1250 | 5000 | 5000 | 2500 |
| | | Kw | 24 | 24 | 24 | 24 | 24 | 24 |

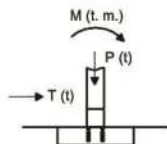
* Opcjonalnie
 Wciągarka
 Wózek
 Obrót
 Jazda

| | | | | | | | | | |
|----------------------------|-----------------|----------------|------------------|---|--|---------------------|------------------------|------------------------|------------------------|
| | | 400 V 50 Hz | * 460 V 60 Hz | 25 Hp (18,5 Kw) 31 Kw / 120 kVA 33 Hp (24Kw) INV 40 Kw / 160 kVA | | 25 m | 50 m | 100 m | |
| 2000/14/CEE 2005/88/CEE | 2006/95 /CEE | | | | | 25 Hp (18,5 KW) 3V | 4 x 25 mm ² | 4 x 25 mm ² | 4 x 25 mm ² |
| | | | | | | 33 Hp (24 KW) INV | 4 x 25 mm ² | 4 x 25 mm ² | 4 x 25 mm ² |

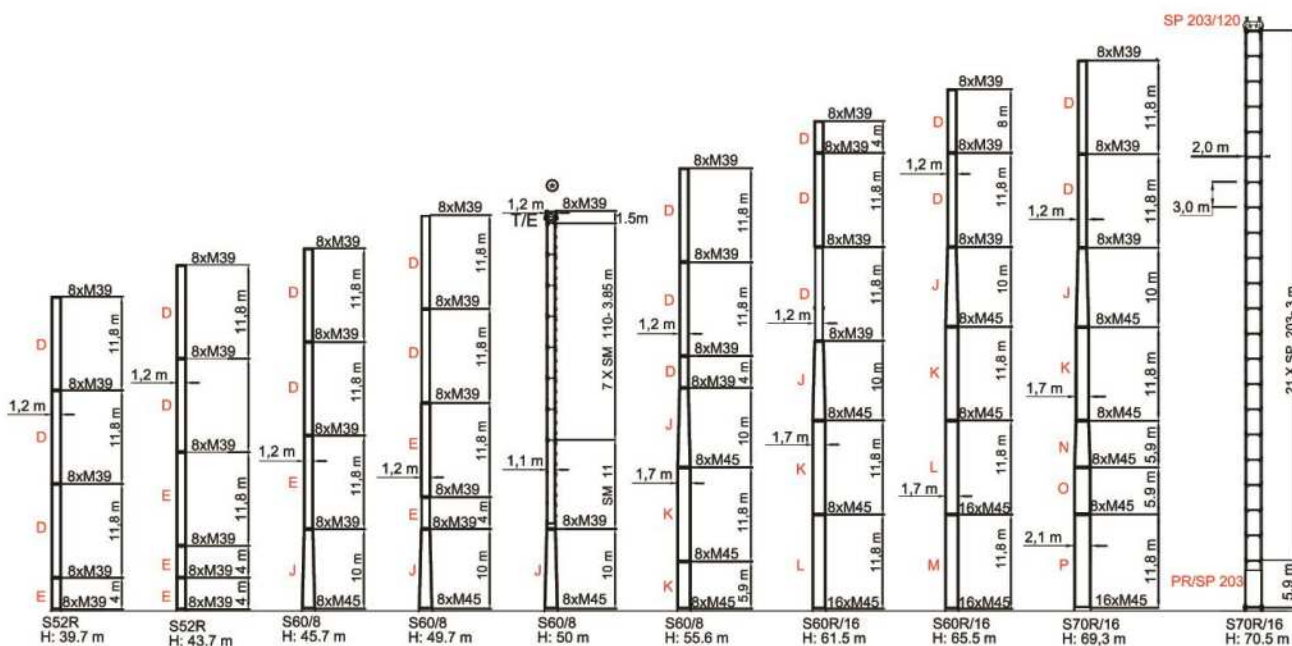
TADEX ŻURAWIE

62-030 Luboń, ul. Dworcowa 47
 tel. +48 61 8 666 777; 601 149 358
 tadex@dzwigi-budowlane.pl

WWW.DZWIGI-BUDOWLANE.PL



- D: WIEŻA S/TL 52-50 1.20 M39/M39 8/8
- E: WIEŻA TL 55 1.20 M39/M39 8/8
- J: CAMPANA S17 10m 1.20/1.70 M39/M45 8/8
- K: WIEŻA S17 1.70 M45 8/8
- L: WIEŻA S17 1.70 M45 16/8
- M: WIEŻA S17 1.70 M45 16/16



| C25 | H (m) | 23.8 | 35.6 | 39.7 | 43.7 | 45.7 | 49.7 | 55.6 | 61.5 | 65.5 | 69.3 |
|-----|---------|------|-------|-------|------|------|-------|-------|-------|------|------|
| | M (T-m) | 110 | 172.3 | 215.7 | 282 | 294 | 352.5 | 441.4 | 548.5 | 585 | 605 |
| | T (t) | 4.6 | 7.1 | 7.9 | 8.7 | 9.2 | 10.3 | 11.7 | 13.2 | 13.5 | 15 |
| | P (t) | 33.5 | 30.1 | 31.4 | 32.5 | 33.1 | 35.2 | 38.8 | 42.1 | 45.4 | 49 |

| D25 | H (m) | 23.8 | 31.6 | 33.7 | 39.7 | 41.7 | 43.7 | 47.6 | 51.5 | 55.5 | 57.3 |
|-----|---------|-------|-------|-------|------|------|-------|-------|-------|------|------|
| | M (T-m) | 126.5 | 172.3 | 215.7 | 282 | 294 | 352.5 | 441.4 | 548.5 | 585 | 605 |
| | T (t) | 5.2 | 7.1 | 7.9 | 8.7 | 9.2 | 10.3 | 11.7 | 13.2 | 13.5 | 15 |
| | P (t) | 40.8 | 30.1 | 31.4 | 32.5 | 33.1 | 35.2 | 38.8 | 42.1 | 45.4 | 49 |

| Zasilanie elektryczne - zapotrzebowanie: | |
|--|---------------------|
| Napięcie zasilające | 400V/50Hz |
| Przekrój poprzeczny kabla | 5x25mm ² |
| Całkowita moc | 30kW |

TADEX ŻURAWIE

62-030 Luboń, ul. Dworcowa 47
 tel. +48 61 8 666 777; 601 149 358
 tadex@dzwigi-budowlane.pl