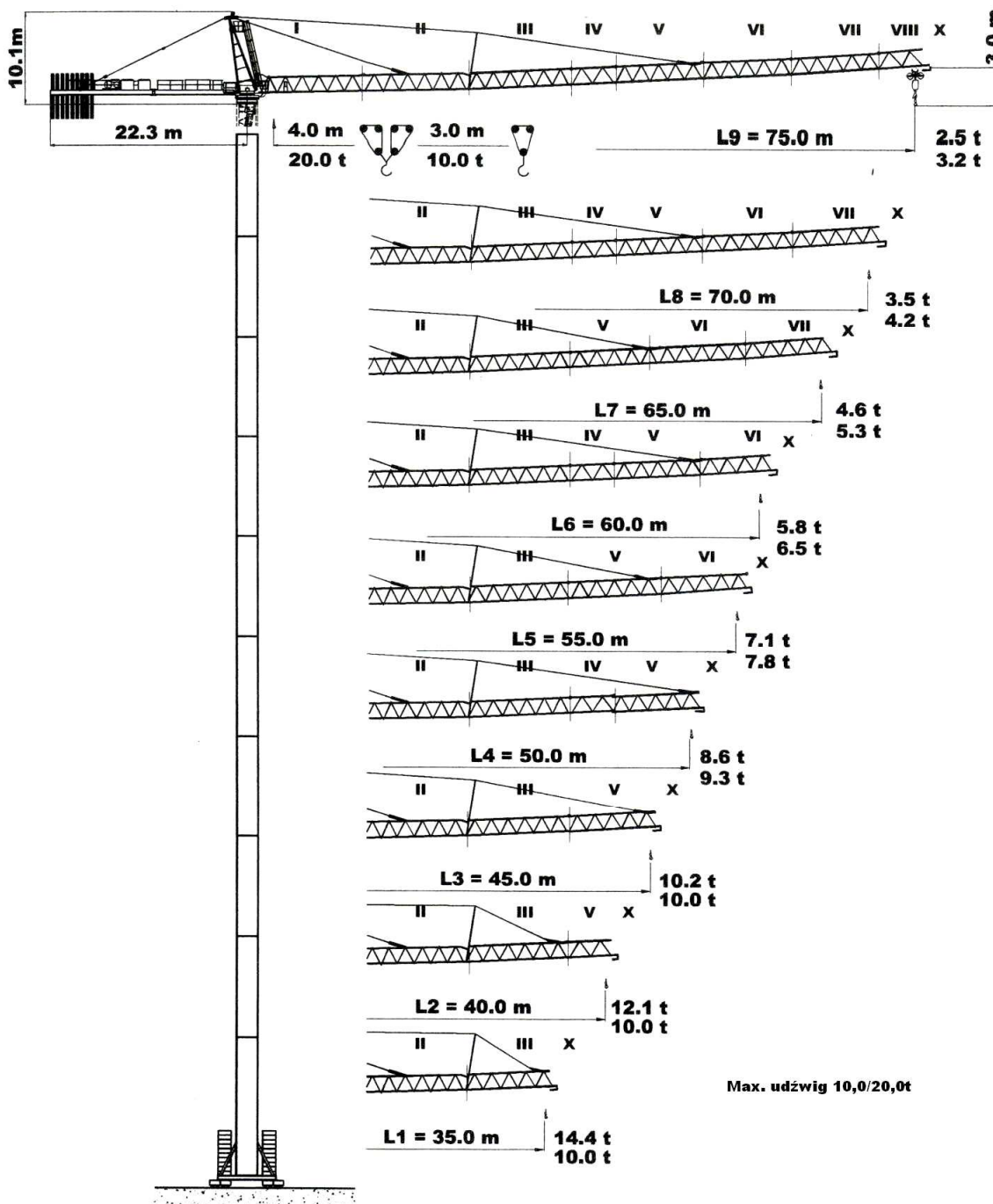
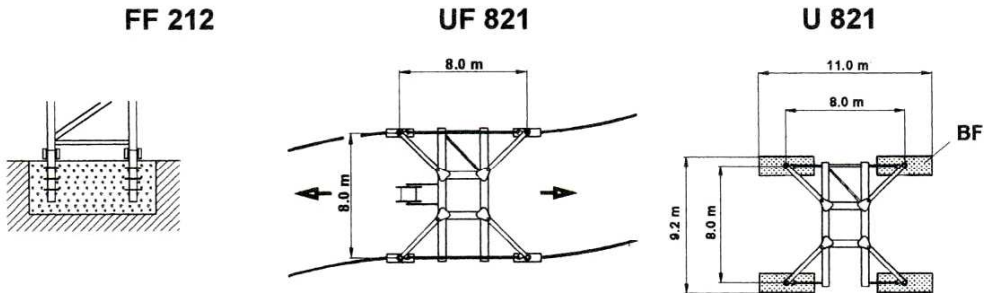
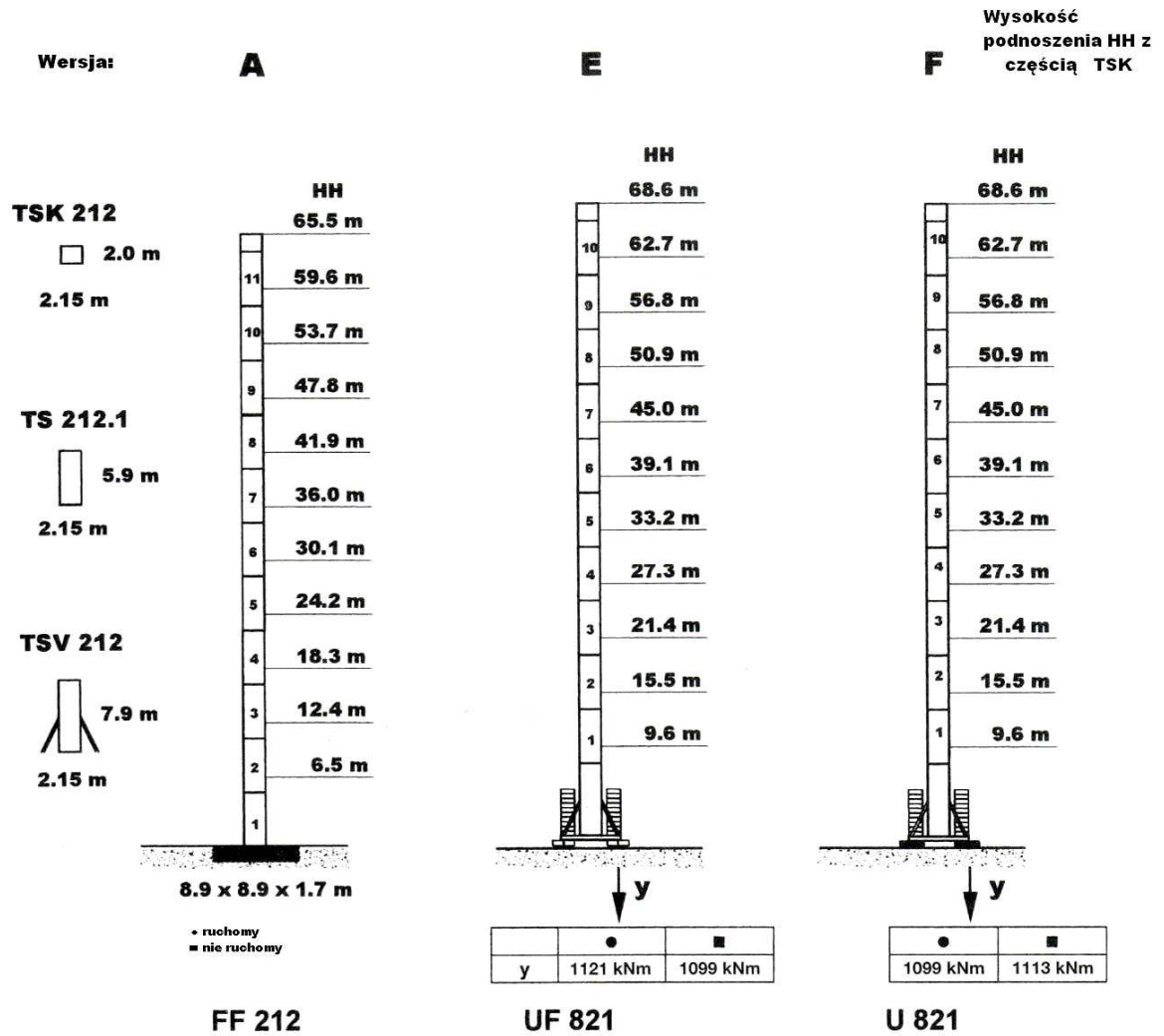


PEINER SK-415



Wersje wieży:



Wersja:

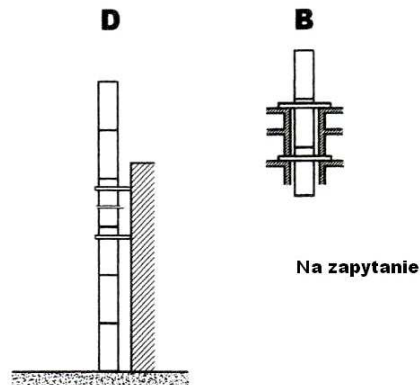


Tabela udźwigu:

Wysięgnik	Max. udźwig		(m)/(t)															
	3.0 m od	4.0 m od	18.0	20.0	23.0	25.0	28.0	30.0	32.0	35.0	40.0	45.0	50.0	55.0	60.0	65.0	70.0	75.0
m	3.0 m do	4.0 m do																
L9 75.0	31.6 m	17.6 m	20.00	18.11	15.11	13.55	11.69	10.68	10.00	8.92	7.56	6.52	5.69	5.01	4.44	3.96	3.55	3.20
L8 70.0	35.6 m	19.4 m	20.00	20.00	17.13	15.39	13.32	12.19	11.21	10.00	8.70	7.53	6.59	5.83	5.20	4.66	4.20	
L7 65.0	39.2 m	21.2 m	20.00	20.00	18.97	17.07	14.80	13.57	12.49	11.13	9.75	8.46	7.43	6.59	5.89	5.30		
L6 60.0	42.4 m	22.7 m	20.00	20.00	20.00	18.53	16.09	14.76	13.61	12.14	10.21	9.28	8.16	7.26	6.50			
L5 55.0	45.0 m	24.0 m	20.00	20.00	20.00	20.00	17.12	15.72	14.51	12.96	10.92	9.94	8.76	7.80				
L4 50.0	47.3 m	25.1 m	20.00	20.00	20.00	20.00	18.03	16.56	15.29	13.67	11.54	10.00	9.30					
L3 45.0	45.0 m	25.6 m	20.00	20.00	20.00	20.00	18.52	17.02	15.72	14.06	11.88	10.20						
L2 40.0	40.0 m	26.0 m	20.00	20.00	20.00	20.00	18.85	17.32	16.00	14.32	12.10							
L1 35.0	35.0 m	26.1 m	20.00	20.00	20.00	20.00	18.95	17.42	16.09	14.40								

**Balast:
Wersja E**

HH (m)	15.5	21.4	27.3	33.2	39.1	45.0	50.9	56.8	62.7	68.6
Balast centralny BZ (t)	79.2	79.2	79.2	79.2	79.2	79.2	79.2	92.4	92.4	105.6
	12 x 6.6	12 x 6.6	12 x 6.6	12 x 6.6	12 x 6.6	12 x 6.6	12 x 6.6	14 x 6.6	14 x 6.6	16 x 6.6

Wersja F

HH (m)	15.5	21.4	27.3	33.2	39.1	45.0	50.9	56.8	62.7	68.6
Balast centralny BZ	79.2	79.2	79.2	79.2	79.2	79.2	79.2	79.2	92.4	105.6
Balast podstawy BF (t)	8 x 6.6	8 x 6.6	8 x 6.6	8 x 6.6	8 x 6.6	8 x 6.6	8 x 6.6	8 x 6.6	10 x 6.6	12 x 6.6
	4 x 6.6	4 x 6.6	4 x 6.6	4 x 6.6	4 x 6.6	4 x 6.6	4 x 6.6	4 x 6.6	4 x 6.6	4 x 6.6

Balast przeciwwagi:

Wysięgnik	L1	L2	L3	L4	L5	L6	L7	L8	L9
Przeciwwaga BG (t)	18.60	18.60	21.70	21.70	21.70	24.80	24.80	24.80	24.80
	6 x 3.10	6 x 3.10	7 x 3.10	7 x 3.10	7 x 3.10	8 x 3.10	8 x 3.10	8 x 3.10	8 x 3.10

Tabela szybkości:

FU 9-200/4		$v = 0 \rightarrow 80 \text{ m/min.}$	1 x 9.0 kW	Przy 440 V albo 480 V /60 Hz moc układów jezdnych jest zwiększona od 10% do 20% a prędkość od 20%		
SR 10-190/4		$v = 0 \rightarrow 30 \text{ m/min.}$	4 x 7.5 kW			
K WB 120/4		$v = 0 \rightarrow 0.75 \text{ min}^{-1}$	L1 - L5 L6 - L9 2 x 7.0 kW 3 x 7.0 kW			
HK max. = 250 m 5 - warstw				400 V / 50 Hz / 3 ph		
Typ: SR WB 66-100/4F 66.0 kW			$\rightarrow 112 \text{ m/min}$ 2 500 kg		$\rightarrow 56 \text{ m/min}$ 5 000 kg	całkowita praca - 95kW bez SR 10-190/4 łączna moc 140 kVA
			$\rightarrow 70 \text{ m/min}$ 4 200 kg		$\rightarrow 35 \text{ m/min}$ 8 400 kg	
			$\rightarrow 45 \text{ m/min}$ 7 100 kg		$\rightarrow 22 \text{ m/min}$ 14 200 kg	
			$\rightarrow 28 \text{ m/min}$ 10 000 kg		$\rightarrow 14 \text{ m/min}$ 20 000 kg	
HK max. = 320 m 6 - warstw						
Typ: SR WB 102-100/4F 102.0 kW			$\rightarrow 160 \text{ m/min}$ 2 800 kg		$\rightarrow 80 \text{ m/min}$ 5 600 kg	całkowita praca - 130kW bez SR 10-190/4 łączna moc 200 kVA
			$\rightarrow 100 \text{ m/min}$ 4 800 kg		$\rightarrow 50 \text{ m/min}$ 9 600 kg	
			$\rightarrow 63 \text{ m/min}$ 8 000 kg		$\rightarrow 31 \text{ m/min}$ 16 000 kg	
			$\rightarrow 40 \text{ m/min}$ 10 000 kg		$\rightarrow 20 \text{ m/min}$ 20 000 kg	

